

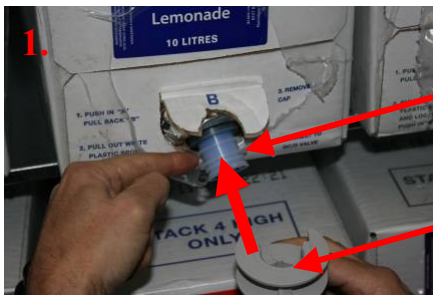
# Changing Postmix Bag in Box Quick Connect / Disconnect (QCD)

1. On new BiB break perforations, pull out spout and remove the dust cap.
2. Remove QCD connector from BiB as per pictures below.

2.

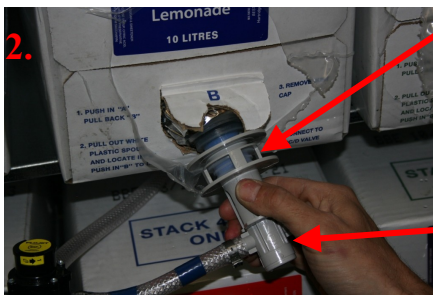


3. Connect new BiB as per pictures below.



Locate inner ring on spout

Hook horseshoe part of QCD connector over ring



Push centre part of QCD all the way in. The BiB is now ready to use.